

YouKnowAnot

Singapore's Leading Monthly Public Survey

COMMUNITY SATISFACTION

Those who say they are satisfied with the way things are going in Singapore

Jun | **71**
May | **72**

Community Satisfaction down one point



PERSONAL FINANCES

Those who rate their personal finances as Excellent/Good

Jun | **65**
May | **67**

Personal Finances down two points



NATIONAL ECONOMY

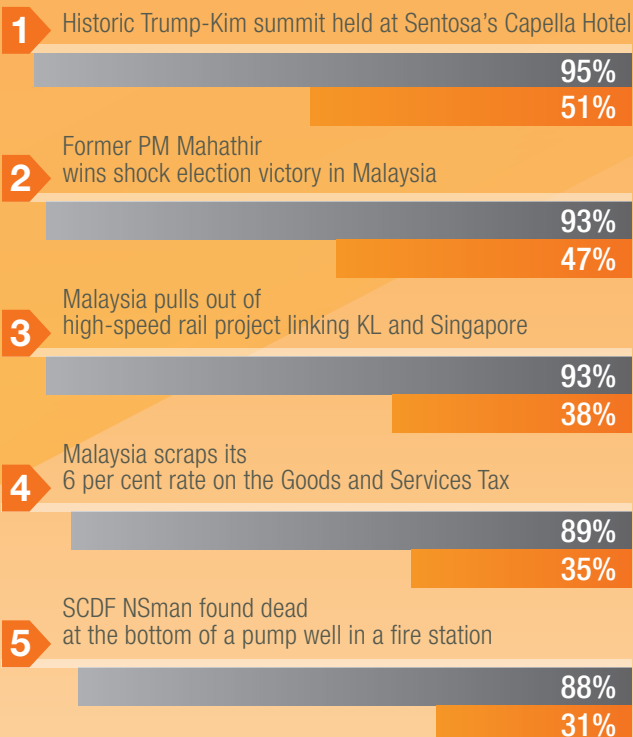
Those who rate current economic conditions in Singapore as Excellent/Good

Jun | **71**
May | **73**

National Economy down two points



Singapore's Top 5 News Stories of the Month



■ % Who Followed the News ■ % Who Paid Close Attention

Does Elitism Exist In Singapore Schools?

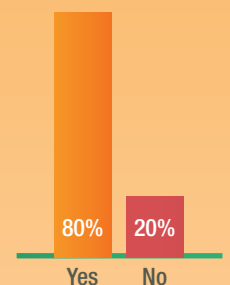


Meritocracy was a hot topic in the Parliament and the media following an earlier sitting where PM Lee Hsien Loong shared an observation that schools like Raffles Institution has become "less diverse" over the years.

"Parentocracy", where parents and the social capital they command may wield greater influence over their children's future, has emerged as a counter force to meritocracy which, arguably, further entrenches social inequalities.

Across all demographics, four in five (80%) Singaporeans believe that schools such as Raffles Institution (RI) and Raffles Girls' School have become too elite, with too many students coming from privileged backgrounds.

Meritocracy or Parentocracy?



Q. ...do you think that schools such as Raffles Institution (RI) and Raffles Girls' School have become too elite...?

Maintaining Social Mobility in Singapore



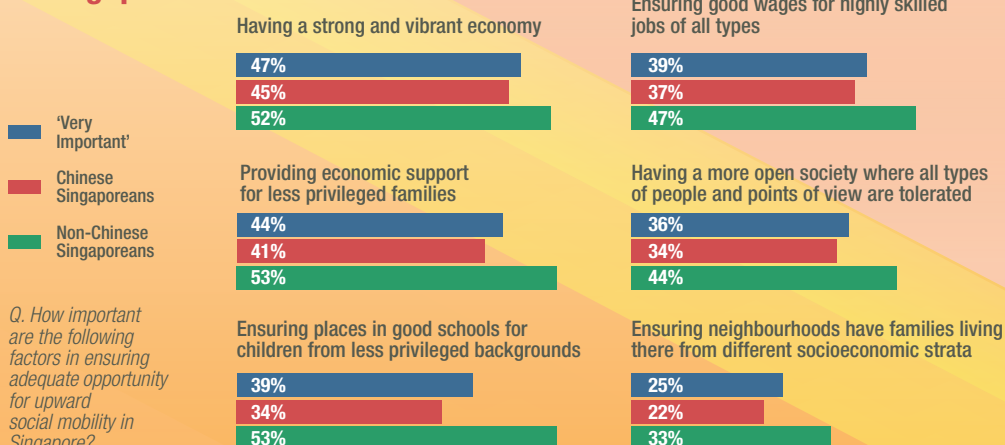
PM Lee Hsien Loong and DPM Tharman Shanmugaratnam have called out that one of Singapore's key challenges moving forward is its citizens' ability to move upwards.

Singaporeans are divided when it comes to the current state of social mobility in the country. Whilst more than half (52%) think that it has remained the same as in the past. One in four (25%) say that it has worsened, while 23% believe that the situation has improved.

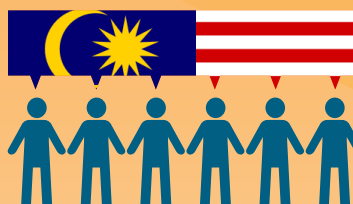
Opinions are similarly split when it comes to comparing Singapore with the rest of the Southeast Asia region. About two in five (39%) feel that upward mobility is the same in Singapore as it is across the region, 30% say it is harder. 31% think Singaporeans have it easier.

Singaporeans also have different views when it comes to evaluating programmes "most important" in helping promote mobility. Chinese Singaporeans favour a fiscal-first approach, rating 'Having a strong and vibrant economy' (45%) and 'Providing economic support for less privileged families' (41%) highest. Non-Chinese Singaporeans, however, are more likely to cite education, considering 'Ensuring places in good schools for children from less privileged backgrounds' (53%) as 'Very Important'.

Most Important in Moving Upwards in Singapore



Singaporeans React to Mahathir's 'New' Malaysia

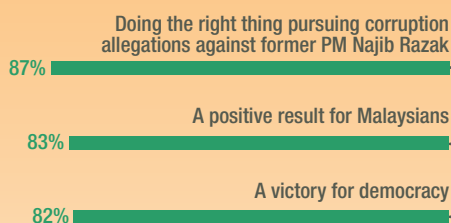


With Mahathir taking the helm of a 'new' Malaysia, there has been multiple political reverberations for its closest neighbour, Singapore, as topics such as the high-speed rail and water supply re-emerge as areas of contention.

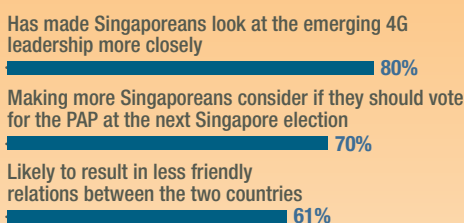
Although Singaporeans are largely in favour of Mahathir for Malaysia – 83% agree that the former PM's win is a positive result for its people, and 82% say that the election was a victory for democracy – more than three in five (61%) believe that the new Malaysian government might signal less friendly relations between itself and Singapore.

Mahathir's 'underdog' victory has also inspired four in five (80%) Singaporeans to take a closer look at their own emerging 4G leaders, whilst 70% think that the Malaysian election result will make more Singaporeans consider if they should vote for the ruling party at the next election.

Mahathir for Malaysia is...



...and The Implications for Singapore



Agree

Q. Tell us whether you agree with the following observations and decisions that have been made since the election result...

Government Satisfaction Index

Monthly
Index

79 GSI

Monthly
Trend

-1

About the Results

Each month Blackbox conducts interviews with a representative sample of 1,000 Singaporeans.

We use a geographically stratified online sample. Our methodology also applies quota controls to ensure representative demographic coverage of the population. If you would like to purchase customised questions for your organisation or want to dig into our historical general community data/demographic information, please contact yuling@blackbox.com.sg for assistance.

Government satisfaction fell by one point to 79 points in June.

Government accountability (-4), CPF/pensions (-4) and the gap between rich and poor (-4) were the areas which fell the most this month. COE (+1) and civil rights (+1) were the only two areas which saw gains, albeit marginal.

Rank	Issue	Satisfaction with Government	Change since last month	Change over last 12 months
1	Crime levels	96	0	1
2	Defence/ national security	95	0	-1
3	Racial relations/ integration	93	-1	0
4	The environment	92	-1	-2
5	Education system	90	0	0
6	Moral standards	86	-3	-1
7	Care for the Elderly	86	-2	-2
8	Management of the economy	84	-2	-1
9	Health insurance/protection	83	-2	-3
10	Public transport	80	0	0
11	Jobs and unemployment	77	0	2
12	Taxes	75	-3	-7
13	Government accountability	74	-4	-7
14	CPF/pensions	74	-4	-5
15	Civil rights/ liberties/ free speech	74	1	-2
16	Level of salaries and wages	72	-1	-2
17	Population management	72	-1	4
18	Housing affordability	66	-1	0
19	Gap between rich and poor	63	-4	-3
20	Motor vehicle prices/ COE	63	1	6
21	Cost of living	57	-2	-2
Overall Government Satisfaction Index		79	-1	-1

Who We Are

Blackbox Research is an award-winning Singapore based agency specialising in communications insights. We provide advanced research, analytics and digital intelligence services for both public sector and commercial clients. Our team has expertise covering market research, strategic communications and messaging, advertising and public policy.

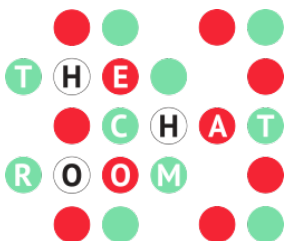
You Know Anot

YouKnowAnot is our monthly community survey platform that has been running since 2013. We interview a representative sample of 1,000 Singaporeans every month. We now use a geographically stratified online sample. Our methodology also applies quota controls to ensure representative demographic coverage of the population. If you would like to purchase customised questions for your organisation or want to dig into our historical general community data/demographic information, please contact yuling@blackbox.com.sg for assistance.

Get In Touch

Blackbox Research Pte Ltd
The Herencia
46 Kim Yam Road
#01-08
Singapore 239351

t (65) 6323 1351
f (65) 6323 1327
w www.blackbox.com.sg



Blackbox Research introduces Singapore's first inspiration laboratory – the Chat Room. Primarily designed for focus group discussions, The Chat Room is a creative space that brings people together. The inviting and relaxed atmosphere allows companies and brands to connect with consumers in meaningful conversations. For more information, visit thechatroom.com.sg